

SPECIFICATIONS

GENERAL:

The surface drainage system shall Food Safe Trench Drain - Round, to be used with trench grates as manufactured by Food Safe Drains.

MATERIALS:

14 ga. T304 Stainless Steel, T316 Stainless Steel

GRATES:

T304 Stainless Steel Load Class D

DESIGN OPTIONS:

Trench Opening (#): 6", 12"
End (*): Open (O), End Cap (1), Outlet
Section Lengths: 5ft"
Typical runs start with 102

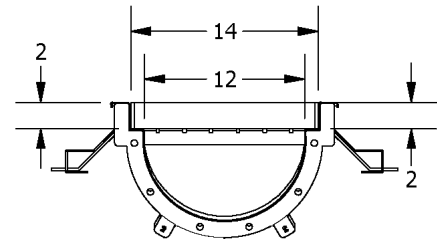
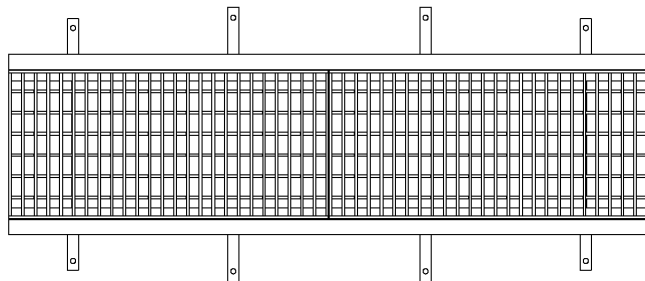
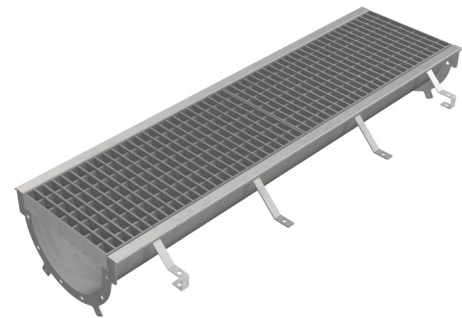
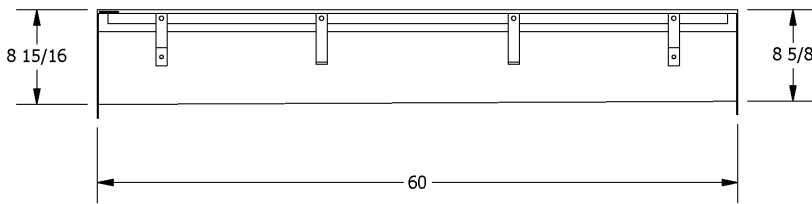
SLOPE:

0.5% Standard

INSTALLATION:

The Food Safe Trench Drain - Round shall be installed in accordance with the manufacturer's installation instructions and recommendations. Trench sections are manufactured with leveling bars and flanges to secure the drain within the concrete slab.

TYPICAL MODULAR LAYOUT OF A FOOD SAFE TRENCH DRAIN - ROUND SYSTEM
(Sections fit together as illustrated below)



DRAIN CHANNELS

DESCRIPTION	PART NO.	INVERT SHALLOW		INVERT DEEP	
		INCHES	MM	INCHES	MM
FSD TRENCH - ROUND 102	FST-102	8 5/8	219.08	8 15/16	227.01
FSD TRENCH - ROUND 203	FST-203	8 15/16	227.01	9 1/4	234.95
FSD TRENCH - ROUND 304	FST-304	9 1/4	234.95	9 9/16	242.89
FSD TRENCH - ROUND 405	FST-405	9 9/16	242.89	9 7/8	250.83
FSD TRENCH - ROUND 506	FST-506	9 7/8	250.83	10 3/16	258.76
FSD TRENCH - ROUND 607	FST-607	10 3/16	258.76	10 1/2	266.70
FSD TRENCH - ROUND 708	FST-708	10 1/2	266.70	10 13/16	274.64
FSD TRENCH - ROUND 809	FST-809	10 13/16	274.64	11 1/8	282.58
FSD TRENCH - ROUND 9010	FST-9010	11 1/8	282.58	11 7/16	290.51

SPECIFYING ENGINEER IS RESPONSIBLE FOR CONCRETE ENCASEMENT AND REINFORCING BASED UPON APPLICATION AND LOCAL CODES.
FOOD SAFE DRAINS RESERVES THE RIGHT TO CHANGE THE PRODUCT AND SPECIFICATIONS WITHOUT NOTICE

2020